

Datenblatt

SD-D-1001-W-03(AS/G)-L

SD-D-1001-R-03(G)-L

SD-D-1001-O-03(G)-L

SD-D-1001-GR-03(G)-L

1. CONNECTION

• SD-D-1001-(W/R/O/GR)-03-L:

Automatic terminals

Terminal capacity: 2 x 2.5mm²

Stripping length: 12mm

2. TECHNICAL CHARACTERISTICS

2.1 Mechanical characteristics

Impact resistance: IK04

Penetration against solid bodies and liquids: IP20

2.2 Material characteristics

Base: PC

Coverplate:

White RAL9003 PC

Red, Green, Orange PC

PC+ antimicrobial* treatment for antimicrobial* socket outlets.

Painted Mat Black PCRAL9017 for Cat. No. 0 793 55L

Painted Aluminium PCvarnished glittery for Cat. No. 0 792 13

Halogen-free

UV-resistant

Self-extinguishing:

850°C/30s for insulating components

650°C/30s for the other insulating part

2.3 Electrical characteristics

Voltage: 250 V~

Current: 16 A

2.4 Climate characteristics

Storage temperature: -10°C to +70°C

Usage temperature: -5°C to +35°C

3. CLEANING

Clean the surface with a cloth.

Do not use acetone, tar-removing cleaning agents or trichloroethylene.

3.1 Resistance to cleaning products

Resistant to the following products: hexane (NFC 61-314), methylated

spirit, soapy water, diluted ammonia, bleach diluted to 10%, window-

cleaning products, pre-impregnated wipes.

3.2 Resistance to hospital grade cleaning products

Resistant to the following products: Anios, Surfanios, Bactylsine, diluted

hydrogen peroxide (35%).

Caution: Always test before using other special cleaning products.

4. ACCESSORIES

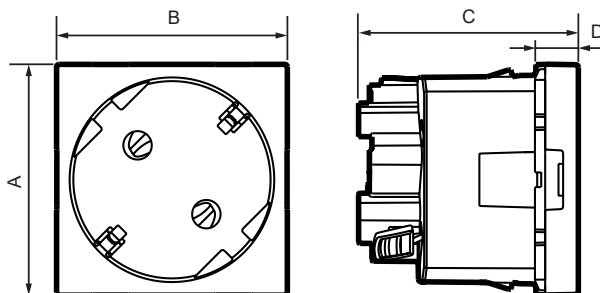
0 676 64	Bulb for socket (SD-D-W/R/O/GR-03-L) with indicator White wired bulbs (wire length = 100 mm) (230 V - 2.4 mA)
0 502 99	Tamperproof

5. STANDARDS AND APPROVALS

Compliant with installation and manufacturing standards.

See catalogue.

6. DIMENSIONS



Cat. Nos	A	B	C	D
SD-D-1001-W-03(AS/G)-L	45	45	39.5	8.5
SD-D-1001-R-03(G)-L				
SD-D-1001-O-03(G)-L				
SD-D-1001-GR-03(G)-L				

7. COLORS



SD-D-1001-W-03(AS)-L (LED weiß)
SD-D-1001-W-03G-L (LED grün)



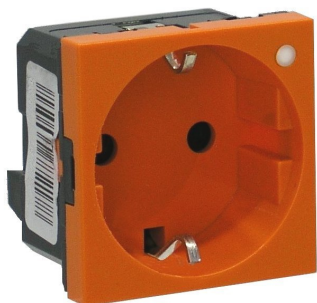
SD-D-1451-W-03-L (LED weiß)
SD-D-1451-W-03G-L (LED grün)



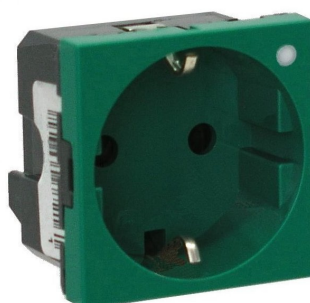
SD-D-1001-R-03-L (LED weiß)
SD-D-1001-R-03G-L (LED grün)



SD-D-1451-R-03-L (LED weiß)
SD-D-1451-R-03G-L (LED grün)



SD-D-1001-O-03-L (LED weiß)
SD-D-1001-O-03G-L (LED grün)



SD-D-1001-GR-03-L (LED weiß)
SD-D-1001-GR-03G-L (LED grün)